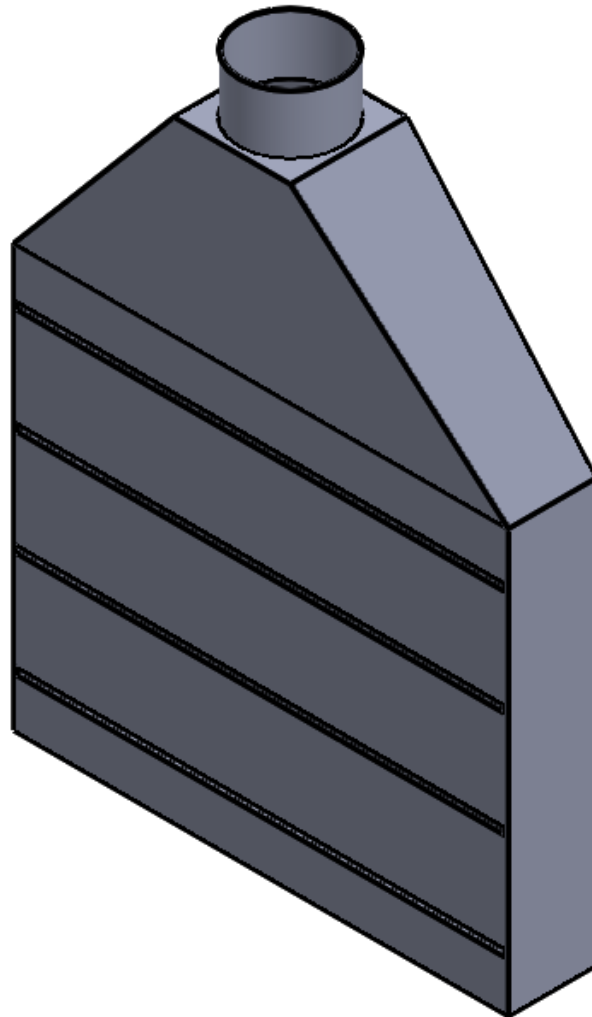


MONOXIVENT[®]

Source Capture Systems

Operation and Maintenance Manual

SFH - Slotted Fume Hoods

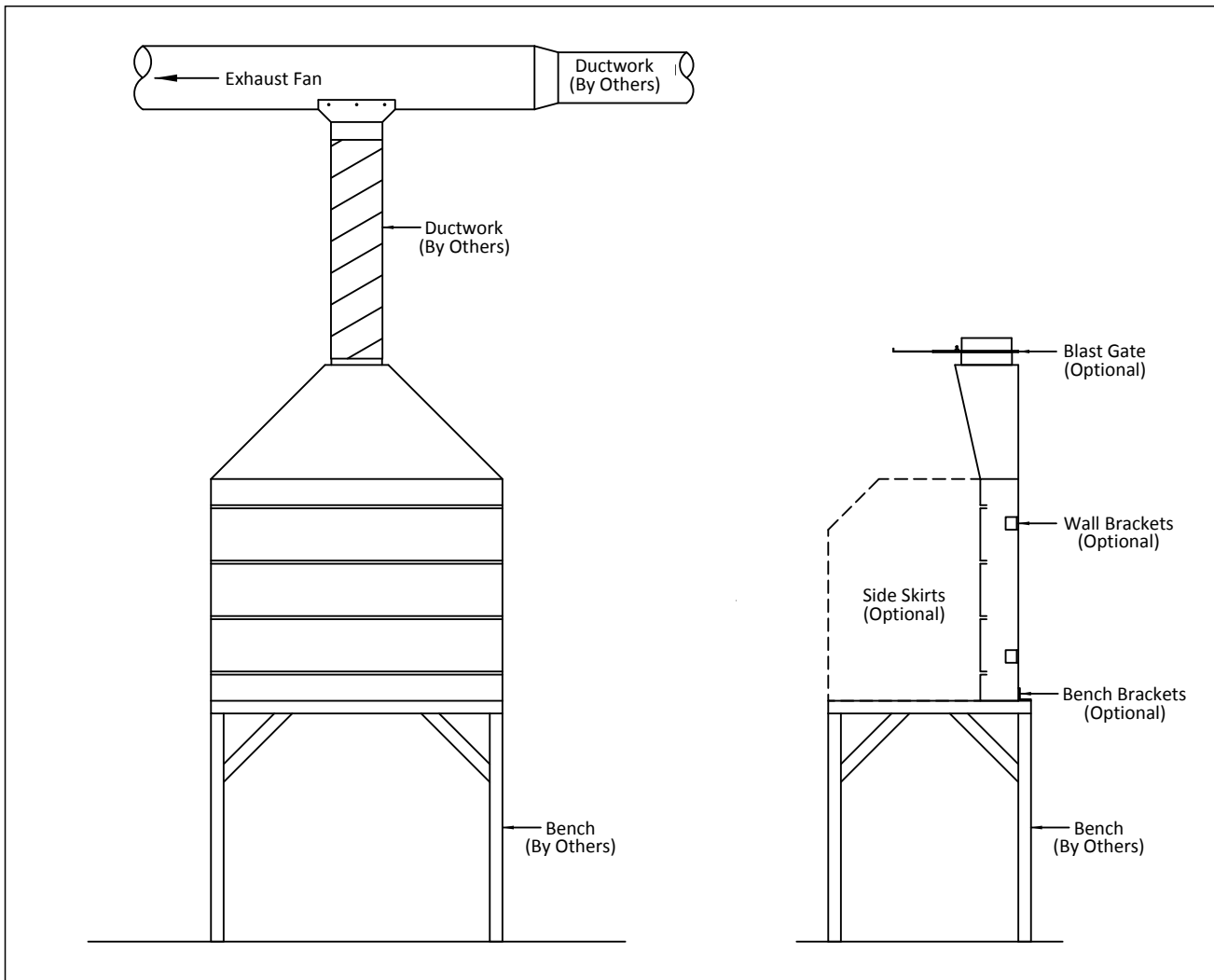


MONOXIVENT - SOURCE CAPTURE SYSTEMS

1306 Mill St., Rock Island, IL 61201
877-608-4383 - info@monoxivent.com
monoxivent.com

Model SFH - Slotted Fume Hoods Installation Instructions

- 1.** Read and understand all instructions prior to starting installation
- 2.** Inspect all equipment when delivered. Report and indicate any damage on freight bill.
- 3.** Remove packing material from slotted fume hood and inspect for hidden damage. If any hidden damage is found, notify the freight carrier immediately and arrange for the carrier to make an inspection.
- 4.** Position the slotted fume hood in a location as directed by the owner. Fasten the hood to the wall or table. Fasteners by others.
- 5.** Attach blast gate to inlet collar of the slotted fume hood. (Optional)
- 6.** Apply sealant to blast gate or inlet collar of the slotted fume hood.
- 7.** Attach the rigid ductwork to the inlet collar or blast gate. Ductwork by others.
- 8.** Attach side baffles. (Optional)



Operation

1. Open the blast gate (optional) and turn on the exhaust fan.
2. After completing use of the slotted fume hood, wait 2 minutes before shutting off the exhaust fan.
3. Close the associated blast gate.

Maintenance

1. Check for particle build up. Clean as necessary.