

Pull-Through Cyclone Dust Collectors



A high efficiency solution for your dust collection requirement

The Pull-Through Cyclone Dust Collector incorporates design simplicity with industrial quality materials to provide years of dependable, low maintenance dust collection. Units are completely weather-proofed for indoor or outdoor installation.

Contaminated air is drawn into the cyclone where the centrifugal action forcibly pulls dust from the airstream, dropping collected particulate into the dust storage container. Cleaned air is discharged through the side outlet transition. The spark-resistant, aluminum fan is located on the “clean air” side of the cyclone, protecting the fan wheel from abrasion.

A complete line of After-Filters are for use with pull-through cyclone units.

STANDARD FEATURES

- High efficiency design
- Spark-resistant, aluminum alloy, direct drive fan wheel
- Bolt-together cyclone construction for easy individual part replacement
- Structural steel supporting unit frame
- Structural steel welded support stand
- Powder coated, durable weather-resistant finish
- Clamp-on, positive sealing, drum cover assembly
- Heavy duty industrial grade construction
- TEFC continuous-duty industrial motor (standard voltage of 230/460-3-60, 3600 RPM)
- Protective motor weather cap assembly
- Multiple dust storage arrangements available

Standard sizes: range from 2 HP to 25 HP

Capacity range: 400 – 8500 CFM

Common applications: woodworking, cutting, grinding, machining, buffing, and polishing

DUST STORAGE ARRANGEMENTS

- One (1) 55 gallon drum [D1] – 7.3 cubic ft.
- Two (2) 55 gallon drums [D2] – 14.6 cubic ft.
- Four (4) 55 gallon drums [HD4] – 29.2 cubic ft.
- Hoppers - 1, 2, 3, and 6 cubic yards
- Rotary valve – up to 34 cubic ft. per minute
- Dumpster arrangement
- Transfer systems

OPTIONAL FEATURES

- After-Filters (open & enclosed)
- Pressure relief devices
- Special motor options and voltages available
- Attenuators, for noise reduction
- Special paint (special color, 2-part epoxy, USDA White, etc.)
- Abrasion resistant linings
- Stainless steel construction
- Job specific modifications

Pull-Through Cyclone Dust Collectors

Standard Specifications

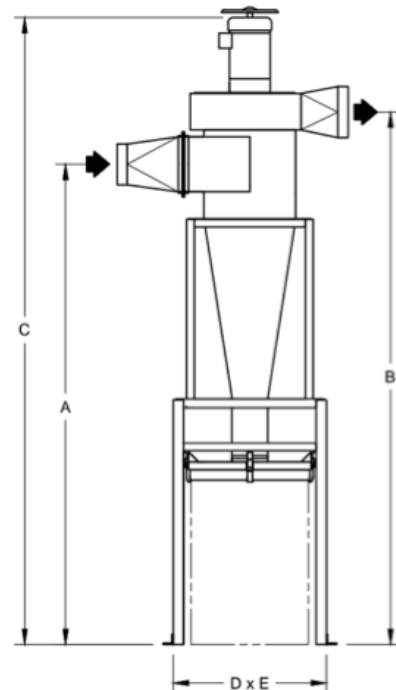
MODEL	MOTOR HP	INLET	OUTLET	CFM RANGE	ESP RANGE	SHIP. WT*
11SN51	2	6"	9"	400-1200	6.6" - 3.7"	320 lbs.
20SN31	3	7", 8"	10"	400-1600	8.5" - 3.0"	530 lbs.
20SN51	5	7" - 10"	10"	400-2300	10.1" - 3.4"	575 lbs.
20SN51-HP	7 ½	6" - 8"	8"	400-1800	20" - 9.3"	600 lbs.
30SN90	7 ½	10" - 12"	12"	1200-3200	11.0" - 3.0"	710 lbs.
30SN100	15	10" - 12"	12"	2000-3500	15.9" - 7.8"	930 lbs.
60SN70	10	12" - 14"	15"	1800-5000	10.5" - 2.7"	1075 lbs.
70SN70	15	12" - 16"	16"	2000-6000	16.3" - 3.2"	1175 lbs.
80SN70	20	14" - 16"	18"	3000-6400	14.3" - 4.5"	1635 lbs.
90SN70	25	16" - 20"	18", 20"	5500-8500	16" - 12"	2160 lbs.

*Shipping weight specified is for a one 55 gallon drum [D1] arrangement.

Standard Dimensions

(with one drum [D1] arrangement)

MODEL	A	B	C	D	E
11SN51	69"	76 ¼"	91"	37 ½"	30"
20SN31	94"	104 ½"	121"	30"	40"
20SN51	94"	104 ½"	123"	30"	40"
20SN51-HP	94"	103 ½"	121 ½"	30"	40"
30SN90	101"	114"	134"	33"	40"
30SN100	101"	114"	135"	33"	40"
60SN70	115"	129"	151"	45"	44 ½"
70SN70	115"	129"	152"	45"	44 ½"
80SN70	128"	145"	170"	60"	52 ¾"
90SN70	139"	160"	192"	72"	72"



SC Series Cyclone Dust Collectors with Bag Type After-Filters



Standard sizes: range from 2 HP to 7 ½ HP
Capacity range: 400 – 3000 CFM
Common applications: smaller scale and maintenance woodshops

A high efficiency solution for your dust collection requirement

The SC series provides an industrial quality, 2-stage dust collector, consisting of a high efficiency pull-through cyclone that removes chips and wood dust from the air, and a bag-type after-filter that captures the remaining fine dust and returns cleaned air to the work area. The result is a simple, compact, and economical collection system for use in lighter duty or intermittent applications. Monoxivent equipment provides years of dependable, low maintenance, and cost-effective dust collection.

STANDARD FEATURES

- High efficiency design
- Spark-resistant, aluminum alloy, direct drive fan wheel on “clean-air” side of cyclone
- Bolt-together cyclone construction for easy individual part replacement
- Structural steel supporting unit frame
- Structural steel welded support stand
- Powder coated, durable long-lasting finish
- Clamp-on, positive sealing drum cover assembly (drum not included)
- Heavy duty industrial grade construction
- TEFC continuous-duty industrial motor (standard voltage of 230/460-3-60, 3600 RPM)
- Durable high efficiency fabric filter material
- Space saving vertically supported filter bag with collection container

OPTIONAL FEATURES

- Pressure relief devices
- Impact panels for increased bag life
- Special motor options and voltages available
- Attenuators, for noise reduction
- Special paint (special color, 2-part epoxy, USDA White, etc.)
- Stainless steel construction
- Application-specific filter material
- Job specific modifications
- 55 gallon drum painted I

Standard Specifications

MODEL	MOTOR HP	INLET	FILTER AREA	FILTER MATERIAL	CFM RANGE	ESP RANGE	SHIP WT*
11SC51-D1	2	6"	67 sq. ft.	canton flannel	400 - 1200	6.6" - 3.7"	425 lbs.
20SC31-D1	3	7", 8"	67 sq. ft.	canton flannel	800 - 1500	7.5" - 3.3"	550 lbs.
20SC51-D1	5	7" - 10"	67 sq. ft.	canton flannel	800 - 2200	9.7" - 3.6"	600 lbs.
30SC90-D1	7 ½	10" - 12"	75 sq. ft.	Singed polyester felt	1500 - 3000	10.3" - 4.7"	740 lbs.

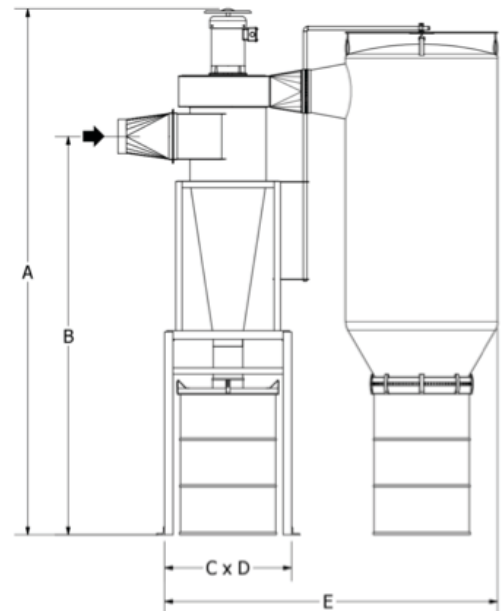
*Shipping weight specified is for a one 55 gallon drum [D1] arrangement.

SC Series Cyclone Dust Collectors

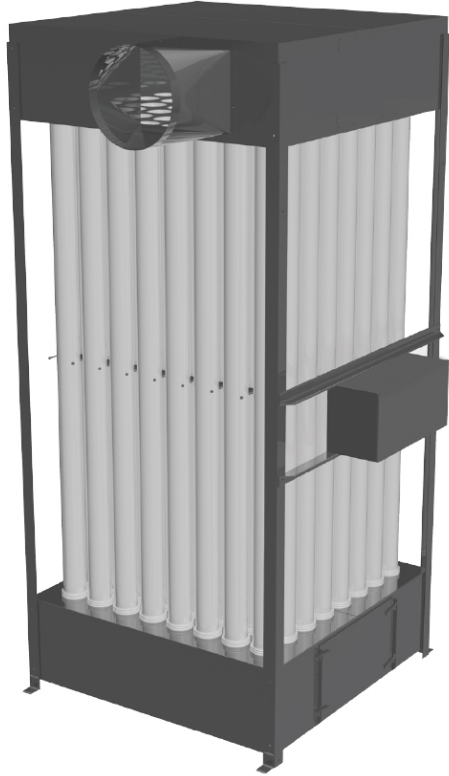


Standard Dimensions (with one drum [D1] arrangement)

Model	A	B	C	D	E
11SC51-D1	91"	68 ¾"	37 ½"	30"	76 ¼"
20SC31-D1	121"	94 ¼"	30"	40"	104 ½"
20SC51-D1	123"	94 ¼"	30"	40"	104 ½"
30SC90-D1	134"	101 ¼"	30"	40"	114"



MONOXIVENT 1306 MILL ST., ROCK ISLAND, IL 61201
 Phone: (877) 608-4383 info@monoxivent.com
 www.monoxivent.com



High efficiency filtration for your dust collection requirements

After-Filters improve air quality and provide a safer working environment by removing fine dust particles from the exhaust airstream. They are generally used to filter dust not removed by a cyclone, yielding breathable, clean air that can be recirculated back into the work area, where allowed.

Woven fabric filter material yields an extremely high filtration efficiency, and is intermittently reconditioned by the integral shaker mechanism, operated either manually or automatically. Collected dust is deposited into a dust storage container, selected to meet specific application requirements.

STANDARD FEATURES

- High efficiency woven fabric filter material
- Standard 5" diameter cotton sateen filter tubes with positive sealing snap-ring cuff
- Standard shaker mechanism (manual or motorized)
- Component bolt-together design and construction
- Supporting structural steel unit frame on open units
- Sheet metal uni-body construction on enclosed units
- Weather resistant powder coated finish
- Heavy duty industrial grade construction
- Standard 3-year warranty on filter tubes with purchased unit and completed application review

Capacity range: 300 – 7000 CFM (CFM dictated by dust)

Common applications: Woodworking, metalworking, plastics, pharmaceuticals, powdered chemicals, and food processing

FILTER MATERIAL CHOICES

- Cotton sateen^A
- Napped cotton sateen^B
- Napped polyester sateen^B
- Napped polypropylene sateen^B
- Filament Dacron
- Seamless Beane bag polyester knit
- Seamless ST01 polyester knit
- Aramid (Nomex) twill

Notes:

A Flame retardant treatment available B Ground wire addition available

OPTIONAL FEATURES

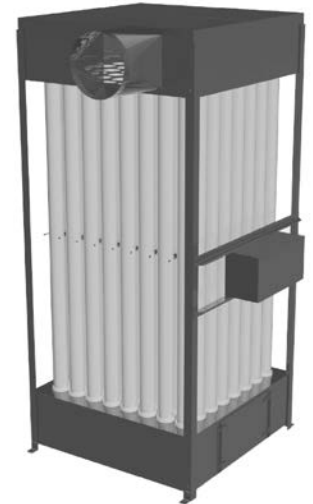
- Pressure relief devices
- Explosion-proof shaker motor
- 50 Hz shaker motor
- Acoustic treatments
- Special colors or paint
- Stainless steel construction
- HEPA filter additions
- Automatic shaker controls
- Magnehelic differential pressure gauge

DUST STORAGE ARRANGEMENTS

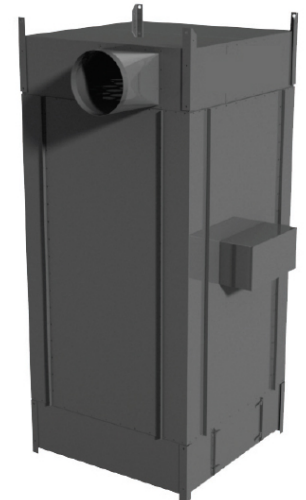
- Standard dust bin
- Dust bin drawer(s)
- One 55 gallon drum – 7.3 cu. ft.
- Two 55 gallon drums – 14.6 cu. ft. (not available on FT24 or FT25)
- Four 55 gallon drums – 29.2 cu. ft. (available on FT64, FT88 only)
- 20 or 35 gallon roller can – 2.7 cu. ft. / 4.7 cu. ft.
- Rotary valve

Standard Specifications

MODEL	FILTER TUBES	FILTER AREA	SHAKER HP	CFM RANGE	DUST BIN STORAGE CAP.	SHIPPING WEIGHT	
						Open unit	Enclosed unit
FT24	24	112 sq. ft.	1/6	300-1000	1.9 cu. ft.	420 lbs.	620 lbs.
FT125	25	170 sq. ft.	1/6	400-1400	9.5 cu. ft.	550 lbs.	790 lbs.
FT25	25 ^A	239 ^B sq. ft.	1/6	600-2000	9.5 cu. ft.	600 lbs.	850 lbs.
FT140	40	272 sq. ft.	1/6	700-2200	14.8 cu. ft.	550 lbs.	830 lbs.
FT40	40 ^A	383 ^C sq. ft.	1/6	1000-3000	14.8 cu. ft.	715 lbs.	940 lbs.
FT164	64	435 sq. ft.	1/2	1100-3500	25.2 cu. ft.	770 lbs.	1155 lbs.
FT64	64	612 sq. ft.	1/2	1600-5000	25.2 cu. ft.	915 lbs.	1370 lbs.
FT188	88	598 sq. ft.	3/4	1500-4900	33.5 cu. ft.	1000 lbs.	1425 lbs.
FT88	88	842 sq. ft.	3/4	2200-7000	33.5 cu. ft.	1390 lbs.	1945 lbs.



OPEN UNIT DESIGN



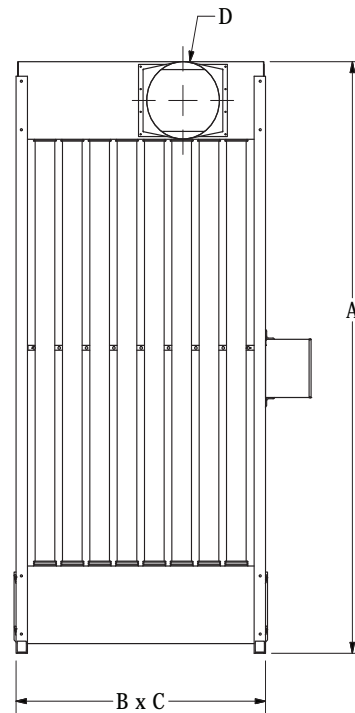
ENCLOSED UNIT DESIGN

Notes:

^A Enclosed units have one less filter tube. ^B Enclosed unit filter area: 229 sq. ft. ^C Enclosed unit filter area: 373 sq. ft.

Standard Dimensions (with standard dust bin)

MODEL	A	B	C	D
FT24	102 3/4"	40 1/2"	24 1/2"	8", 10"
FT125	96"	32 1/2"	32 1/2"	8", 9", 10", 12"
FT25	122"	32 1/2"	32 1/2"	8", 9", 10", 12"
FT140	96"	50 1/2"	32 1/2"	8", 9", 10", 12"
FT40	122"	50 1/2"	32 1/2"	8", 9", 10", 12"
FT164	96"	54 1/2"	54 1/2"	12", 15", 16"
FT64	122"	54 1/2"	54 1/2"	12", 15", 16"
FT188	96"	72 1/2"	54 1/2"	12", 15", 16"
FT88	122"	72 1/2"	54 1/2"	12", 15", 16"



FH Series After-Filters



Model FH58-4D shown above

Shaker-type filter units are designed to improve air quality and provide a safer work environment by removing fine dust particles from high volume exhaust airstreams. Often used after cyclones, MONOXIVENT after-filters remove fine dust that passes through the cyclone. This process yields clean environmentally safe air which can be recirculated back into the work area, where allowed. Woven fabric filter material provides an extremely high filtration efficiency, and is intermittently reconditioned by the motorized filter shaker mechanism. MONOXIVENT after-filters are commonly used in situations where high air volumes and heavy dust loads exist. The modular design allows for multiple assemblies to be

combined to maximize filtration in high volume industrial operations.

STANDARD FEATURES

- High efficiency woven fabric filter material
- Standard 5" diameter cotton sateen filter tubes
- Positive sealing snap-ring cuff filter tubes
- Standard motorized shaker mechanism
- Component bolt-together design and construction
- Supporting structural steel base frame
- Weather resistant powder coated finish
- Heavy duty industrial grade construction
- Compatible with both pull-through and push-through configurations
- Access door and interior aisle for easy maintenance and filter change-out
- Standard 3-year warranty on filter tubes with purchased unit and completed application review

Capacity range: 1500 – 30000 CFM (CFM dictated by dust)
Common applications: Woodworking, metalworking, plastics, pharmaceuticals, powdered chemicals, and food product processing

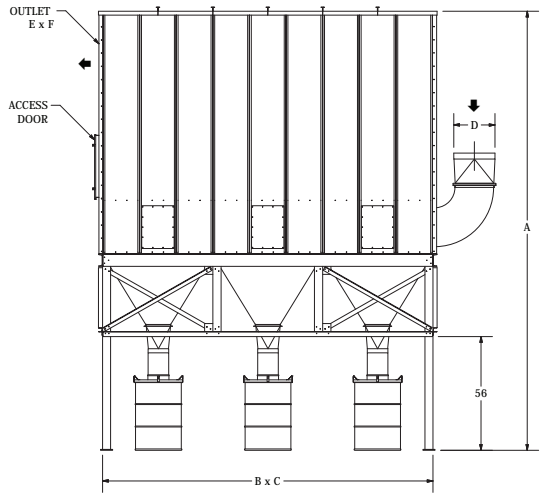
Standard Specifications

MODEL	FILTER TUBES	FILTER AREA	SHAKER(S) HP	CFM RANGE	DUST HOPPER STORAGE CAPACITY	SHIPPING WEIGHT
FH58-1	80	700 sq. ft.	one 1/2	1500 - 5000	30 cu. ft.	2700 lbs.
FH58-2	160	1400 sq. ft.	one 1/2	3000 - 10000	60 cu. ft.	4067 lbs.
FH58-3	240	2100 sq. ft.	one 3/4	4500 - 14000	90 cu. ft.	5700 lbs.
FH58-4	320	2800 sq. ft.	two 1/2	6000 - 17000	120 cu. ft.	6845 lbs.
FH58-5	400	3500 sq. ft.	one 3/4 , one 1/2	7500 - 20000	150 cu. ft.	9170 lbs.
FH58-6	480	4200 sq. ft.	two 3/4	8500 - 23000	180 cu. ft.	10500 lbs.
FH58-7	560	4900 sq. ft.	one 3/4, two 1/2	10000 - 27000	210 cu. ft.	12125 lbs.
FH58-8	640	5600 sq. ft.	four 1/2	12000 - 30000	240 cu. ft.	13226 lbs.

Model FH58 Series continued

Standard Dimensions

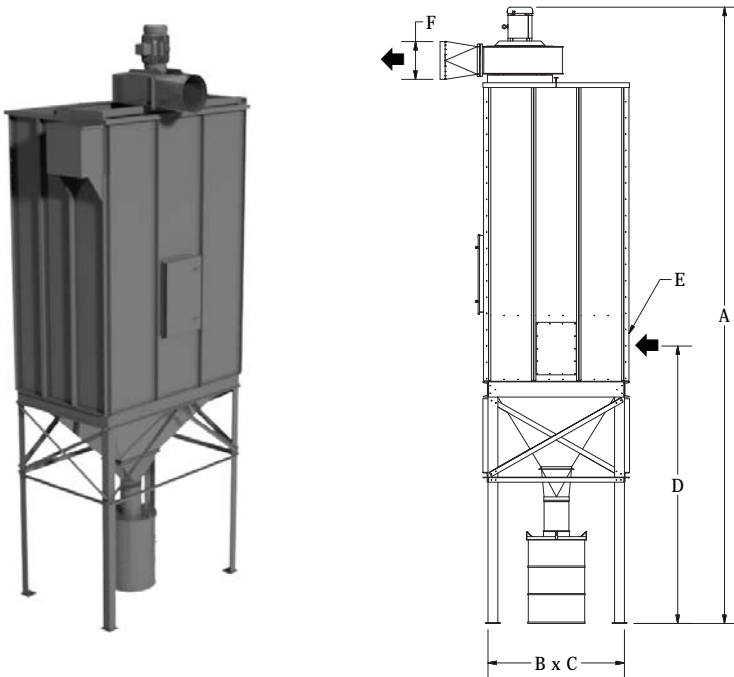
Model	A	B	C	D	E	F
FH58-1	18' 2"	4' 6 1/2"	7' 1/4"	18", 20"	20"	30"
FH58-2	18' 2"	9' 2 1/2"	7' 1/4"	18", 20" A	20"	30"
FH58-3	18' 2"	13' 8 1/2"	7' 1/4"	18", 20" A	20"	30"
FH58-4	18' 2"	18' 2 1/2"	7' 1/4"	Two 19" x 19" A	20"	36"
FH58-5	18' 2"	22' 6 1/2"	7' 1/4"	Two 19" x 19" A	20"	48"
FH58-6	18' 2"	27' 1/2"	7' 1/4"	Two 19" x 19" A	20"	48"
FH58-7	18' 2"	31' 6 1/2"	7' 1/4"	Two 19" x 19" A	20"	48"
FH58-8	18' 2"	36' 1/2"	7' 1/4"	Two 19" x 19" A	20"	48"



Model FH58-3D shown above

FH58-1D factory assembly available, larger models require jobsite assembly by others.

A High CFM applications require special inlet and outlet arrangements.



FH58S Series

FH58S Pull-Through Series shaker-type fan-filter units are designed with a top mounted direct drive exhaustor to draw contaminated air into the after-filter for removal of fine particles. The FH58S Series has been developed for use in applications where light to moderate dust volumes are present. The top mounted exhaustor includes a cast aluminum alloy, spark-resistant fan and heavy gauge steel welded housing. The exhaustor is equipped with a TEFC continuous-duty industrial motor for superior performance in tough conditions.

All standard features for the FH58S Series are the same as the FH58 Series.

FH58S-1D factory assembly available, larger models require jobsite assembly by others.

Standard Dimensions

MODEL	A	B	C	D	E	F
FH58S-1	20' 8"	4' 6 1/2"	7' 1/4"	9' 1 1/2"	8" - 16"	10" - 17"
FH58S-2	20' 8"	9' 2 1/2"	7' 1/4"	9' 1 1/2"	8" - 16"	10" - 17"
FH58S-3	20' 8"	13' 8 1/2"	7' 1/4"	9' 1 1/2"	8" - 16"	10" - 17"
FH58S-4	20' 8"	18' 2 1/2"	7' 1/4"	9' 1 1/2"	12" - 16"	10" - 17"

FILTER MATERIAL CHOICES

- Cotton sateen^B
- Napped cotton sateen^C
- Napped polyester sateen^C
- Napped polypropylene sateen^C
- Filament Dacron
- Seamless Beane bag polyester knit
- Seamless ST01 polyester knit
- Aramid (Nomex) twill

Notes:

B Flame retardant treatment available
 C Ground wire addition available

OPTIONAL FEATURES

- Pressure relief devices
- Explosion-proof shaker motors
- Automatic shaker controls
- Magnehelic differential pressure gauge
- Integral exhauster arrangements
- High CFM requirement arrangements
- 50 Hz shaker motors
- Special colors or paint
- Stainless steel construction
- Truck clearance legs

DUST STORAGE ARRANGEMENTS

- Standard hopper with slide gate –30 cu. ft. each
- One 55 gallon drum – 7.3 cu. ft. each
- Two 55 gallon drums equal 14.6 cu. ft.
- Rotary valve
- Transfer system fit-up

COMMON ARRANGEMENT:

Illustrated at right: cyclone primary collector with rotary valve on high clearance stand, after-filter with 55 gallon drums, system exhauster, and acoustic attenuator

Exhauster Fan Specifications

EXHAUSTER MODEL	MOTOR HP	INLET	CFM RANGE	ESP RANGE
20SE51	5	8", 10"	1000 – 2000	7.7" – 3.7"
30SE71	10	10", 12"	1500 – 3000	9.8" – 5.5"
60SE70	15	12", 14"	2000 – 4500	10.5" – 4.9"
70SE70	20	12", 14", 16"	3000 – 6500	15" – 6.2"

Standard Specifications

MODEL	FILTER TUBES	FILTER AREA	SHAKER(S) HP	CFM RANGE	DUST HOPPER STORAGE CAPACITY	SHIPPING WEIGHT
FH58S-1	80	700 sq. ft.	one 1/2	1500 - 5000	30 cu. ft.	2700 lbs.
FH58S-2	160	1400 sq. ft.	one 1/2	3000 - 10000	60 cu. ft.	4067 lbs.
FH58S-3	240	2100 sq. ft.	one 3/4	4500 - 14000	90 cu. ft.	5700 lbs.
FH58S-4	320	2800 sq. ft.	two 1/2	6000 - 17000	120 cu. ft.	6845 lbs.



System Installations

At right: collection equipment servicing an alloy steel grinding application. Equipment includes a 1005-D2 cyclone primary collector, FH58S-5D shaker-type after-filter, 100E75 75 HP high efficiency system fan on the clean-air side controlled by a DUSTKOP electrical control panel. Design exhaust rate of 16,800 CFM.



At right: collection equipment servicing a large school wood shop in downtown Detroit. Equipment includes a DUSTKOP 100N50-D2 cyclone unit primary collector with a 50 HP integral material handling fan, FH58-3 shaker-type after-filter, 5 HP scavenging fan re-inducing baghouse dust into the cyclone, and a DUSTKOP electrical control panel.





Shown above: Model DDT-3630

A high efficiency solution for your dust collection requirement

Downdraft tables are engineered to protect manufacturing environments and collect dust and fumes created from multiple handheld fabricating processes. When attached to an exhauster powered dust collector, the downdraft table design captures contaminants to be drawn into the collection system and away from the worker's breathing zone.

Downdraft tables provide an effective dust containment method for cutting, grinding, polishing and buffing. The modular design allows multiple down-draft tables to be placed together in a work area and connected to a single pull-through dust collector.

Downdraft tables are an efficient, economical way to help comply with OSHA Clean Air Standards and to protect employees from hazardous dust, smoke, and fumes generated by various industrial processes.

STANDARD FEATURES

- Heavy-duty, all steel welded industrial grade construction
- Hopper style bottom to exhaust outlet
- Industrial grade open steel grating work surface
- Powder coated, durable, long-lasting finish
- Stand-alone, simple design allows for connection to existing dust collector, reducing the need for additional power consuming equipment

Standard workspace sizes: range from 36" x 30" to 48" x 96"

Capacity range: 150 – 250 CFM per square foot (job specific requirement)

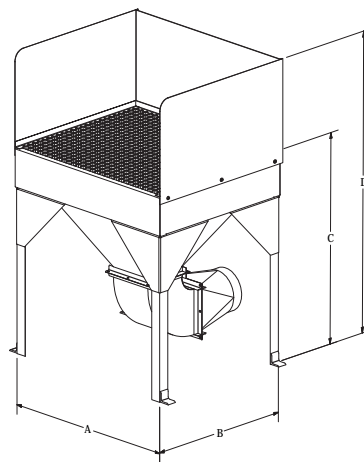
Common applications: metalworking and woodworking processes: cutting, grinding, buffing, polishing, etc.

OPTIONAL FEATURES

- PVC open mesh surface matting to protect delicate or finished parts
- Back and side shields to eliminate cross-drafts and contain debris (standard height 18")
- Booth enclosures and lighting for optimal workplace visibility
- Optional white interior finish on booth to enhance illumination
- Cleanout door in standard outlet elbows for easy access to retrieve parts or tools
- Exhaust manifold for single point duct connection
- Special paint (special color, 2-part epoxy, USDA White, etc.)
- Stainless steel construction
- Job specific sizing and modifications

Standard Specifications

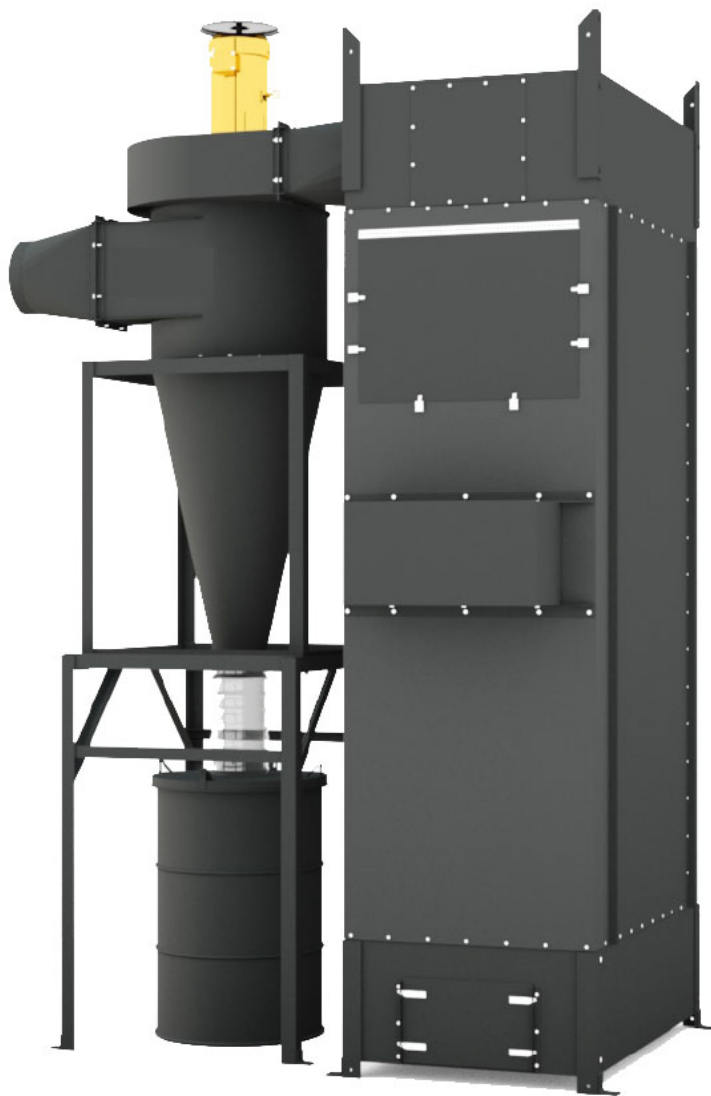
Model	Hopper Style	Outlet Elbow	Estimated Shipping Weight	Dimensions			
				A	B	C	D
DDT-3630	1	7", 8"	330 lbs.	36"	30"	38"	56"
DDT-3636	1	7, 8, 9"	360 lbs.	36"	36"	38"	56"
DDT-3642	1	8", 10"	370 lbs.	36"	42"	38"	56"
DDT-4836	1	9", 10"	380 lbs.	48"	36"	38"	56"
DDT-4842	1	10", 12"	410 lbs.	48"	42"	38"	56"
DDT-4848	1	10", 12"	430 lbs.	48"	48"	38"	56"
DDT-3660	2	two 7" or 8"	660 lbs.	60"	36"	38"	56"
DDT-3672	2	two 7", 8" or 9"	700 lbs.	72"	36"	38"	56"
DDT-3684	2	two 8" or 10"	750 lbs.	84"	36"	38"	56"
DDT-4872	2	two 9" or 10"	750 lbs.	72"	48"	38"	56"
DDT-4884	2	two 10" or 12"	800 lbs.	84"	48"	38"	56"
DDT-4896	2	two 10" or 12"	865 lbs.	96"	48"	38"	56"



Shown at right: Model DDT-3672 with optional PVC open mesh surface matting, manifold option to single exhaust outlet, and booth enclosure with lighting.

DUST COLLECTION FOR SCHOOL WOODSHOPS

MONOXIVENT Can Solve Your Dust Problems



Dust Collectors For School Woodshops

Low Cost

Easily and Quickly Installed

Energy Efficient

Monoxivent has developed products to prevent the issues harmful wood particles and dust can create. Thousands of satisfied customers can testify to the efficiency and quality of the equipment produced by Monoxivent.

Engineers have developed a quality dust collector that is energy efficient and low in cost. This simplified system will keep your shop area clean and safe.

Monoxivent also offers support throughout the USA and Canada – whether it's answering questions, finding solutions, or installation, our knowledgeable sales team is there for you.

Dust collection simplified with Monoxivent....

Monoxivent designs our collectors to capture a large range in size of dust particles that could potentially hinder a safe and clean environment. A typical arrangement consists of a two-stage system – a high efficiency pull-through cyclone separator that removes chips and wood dust from the air, plus an after-filter that captures the remaining fine dust and sub-micron particles. Clean, filtered air can be returned to the shop area, where permitted.

The cyclone separator is the most efficient dust collector for its cost.

The SN Series cyclones are equipped with top mounted motors and fans which pull contaminated air into the cyclone through the lower side opening. The centrifugal effect of the cyclone created by rapid rotation of the high velocity air stream, forcibly precipitates dust out of the bottom and into a container sized to fit the application.

Cleaned air is released through the upper side opening. These units are completely weather proof for outdoor use, and are available with one or two drum dust storage (drums sold separately). Cyclone acts as a spark arrestor.



Monoxivent fabric filters last up to 10 years on a typical school wood shop application. Monoxivent warranties fabric filters for 3 years, or we will replace them for free. Save money by avoiding cartridge-type after-filters that require frequent replacement.

STANDARD DUSTKOP FEATURES:

- Weather resistant powder coated finish
- High efficiency woven fabric filter material
- Manual or motorized filter shaker mechanism
- Heavy duty industrial grade construction
- Bolt together design and construction
- 3 year warranty on Monoxivent fabric filters with purchase of new collection system

OPTIONAL DUSTKOP FEATURES:

- Pressure relief devices
- Special motor options and voltages available
- Attenuators, for noise reduction
- Special paint (special color, 2-part epoxy, USDA White, etc.)
- Abrasion resistant linings
- Stainless steel construction
- Job specific modifications
- 55 gallon drum painted to match Monoxivent equipment

Tight budget?

Monoxivent has the best quality dust collectors for a reasonable cost. The combination of our industrial materials, weather proof finish, efficiency and craftsmanship give our product the longest life span of any dust collector on the market.

Our engineers have over 40 years of experience in dust collection, and they are experts on providing a simple, safe, and cost-effective solution for you.

The life span of our products and affordability make it a wise investment for any educational wood shop.

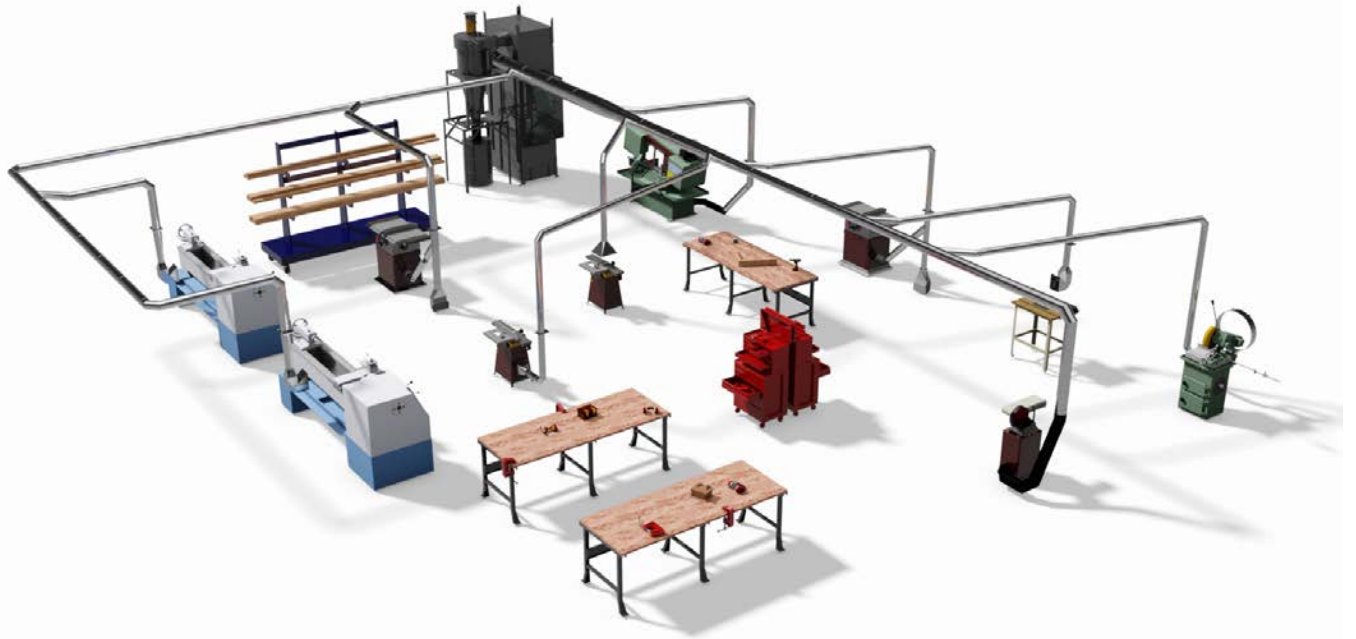
Need help with safety requirements?

Educators everywhere are protecting instructors, students, machinery and buildings by eliminating dust at its source. Compliance with regulations is not as difficult as it seems. Our experts will help guide you through NFPA requirements.

Whether you are building a new shop, modernizing present facilities, or relocating, an AGET Dust Specialist can help.

These photos illustrate ductwork connections to machines in an educational woodshop. The centralized dust collector captures dust at its source.





Monoxivent is equipped to maximize your shop layout for better utilization of equipment

Don't know where to start? Our design team can assist in developing a floor plan to meet your specific needs.

Always refer to local, state, and federal codes, and other recognized design standards, such as the ACGIH Industrial Ventilation Manual and the NFPA 664, when designing school woodshop exhaust systems.

For a dust free, healthy, educational atmosphere, Monoxivent has the answer.

Typical Airflow for Woodworking Machines

Machine	Size	CFM
Table Saw	10"-14"	550
Radial Arm Saw	10"-14"	550
Band Saw	14"-20"	200
Scroll Saw	—	200
Chop Saw	10"-12"	550
Planer	12"-20"	800
Jointer	6"	350
Jointer	8"-12"	550
Shaper	STD	350
Shaper	HD	550
Disc Sander	12"	200
Belt Sander	6"	200-350



MONOXIVENT 1306 MILL ST., ROCK ISLAND, IL 61201
 Phone: (877) 608-4383 info@monoxivent.com
 www.monoxivent.com

Rotary Valves



A high efficiency solution for your dust collection requirement

Rotary valves are designed to improve the efficiency of dust handling and disposal. The standard six-vane rotor provides superior air sealing performance compared to common four blade configurations. The positive airtight seal between the collector and the environment allows for the use of larger, open, non-sealed collection containers such as a dumpster or truck trailer, which require less frequent disposal.

Rotary valves greatly benefit applications such as woodworking or aluminum chip processing, where large quantities of material are generated quickly. A rotary valve is a heavy duty fabricated type unit that is designed to yield a long, dependable life.



STANDARD FEATURES

- Heavy-duty, industrial grade construction
- Precision, laser-cut components
- Reinforced rotor to prevent rotor vanes from bending
- Replaceable neoprene rubber seals
- Removable safety chain and drive guards for easy inspection and maintenance
- Welded angle iron support brackets on body for easy four-point suspension and installation
- Powder coated, durable long-lasting finish, weather resistant

Standard sizes: 8", 10", or 12"

Capacity range: 14.4 to 68 cu. ft. per min. at 100% fill rate

Common applications: metalworking, woodworking, etc.

OPTIONAL FEATURES

- Rotary valve adapter with clean out door
- Structural support
- Square inlet and/or discharge flange
- Abrasion resistant (AR) steel
- Urethane seals for abrasion resistance
- Special paint (special color, 2-part epoxy, USDA White, etc.)
- Stainless steel construction
- Special motor voltages
- Discharge transfer venturi
- Job specific sizing and modifications

Standard Specifications and Dimensions

Model	Inlet / Outlet Diameter	Motor HP	Cu. Ft. per Min. @ 100% Fill Rate	Cu. Ft. per Min. @ 50% Fill Rate	Cubic Feet / Revolution	Number of Vanes	Height	Shipping Weight
RV6-8	8"	1	14.4	7.2	.72	6	19"	375
RV6-10	10"	2	39	19.5	1.56	6	24"	545
RV6-12	12"	2	68	34	2.72	6	28"	635

DUST COLLECTION

Monoxivent provides a full line of industrial dust and mist collection equipment and accessories for a complete system that can be designed to fit your application.

