

# MONOXIVENT<sup>®</sup>

Source Capture Systems

## Operation and Maintenance Manual

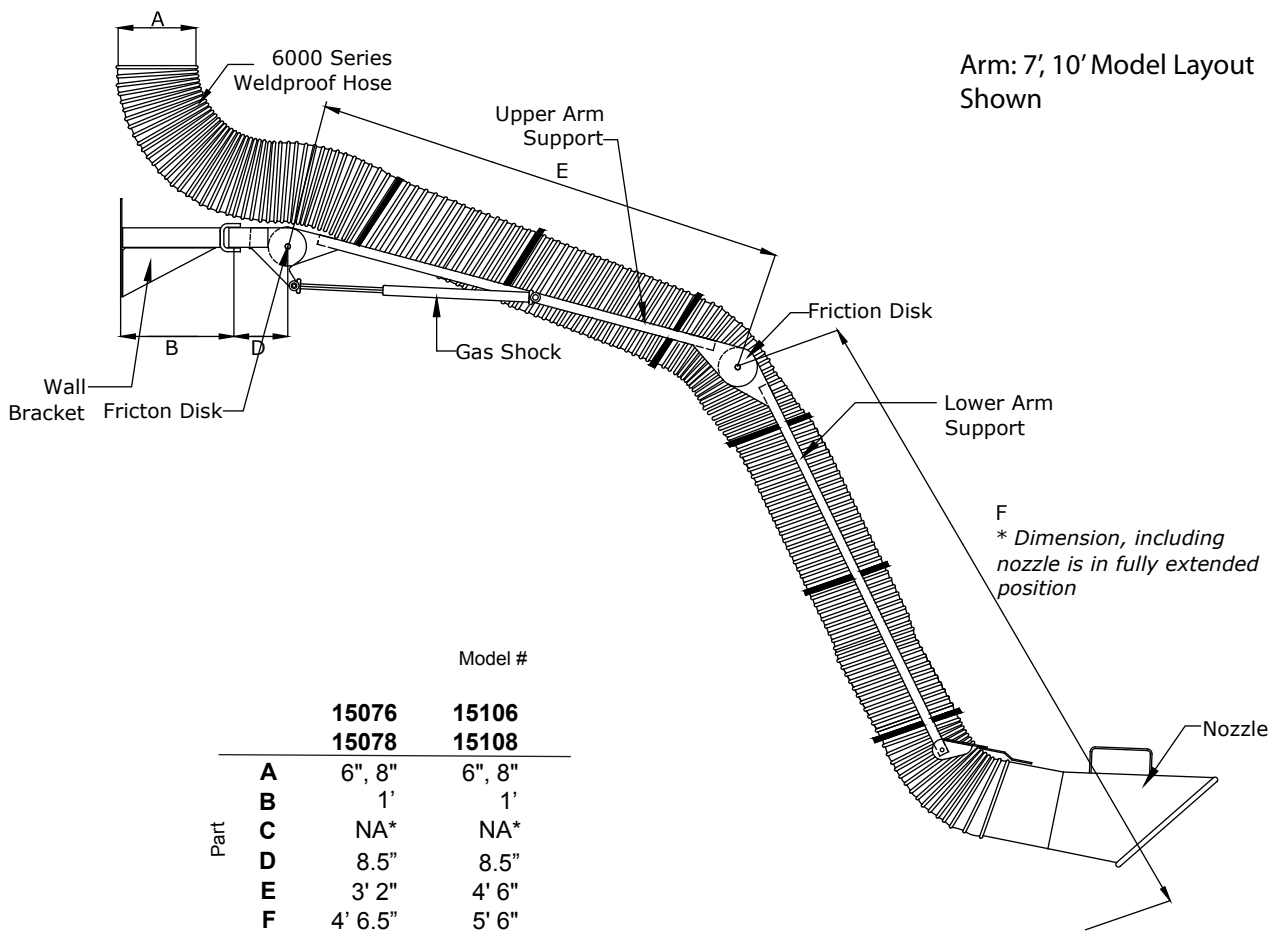
### Series 15000 - EXT



**MONOXIVENT - SOURCE CAPTURE SYSTEMS**

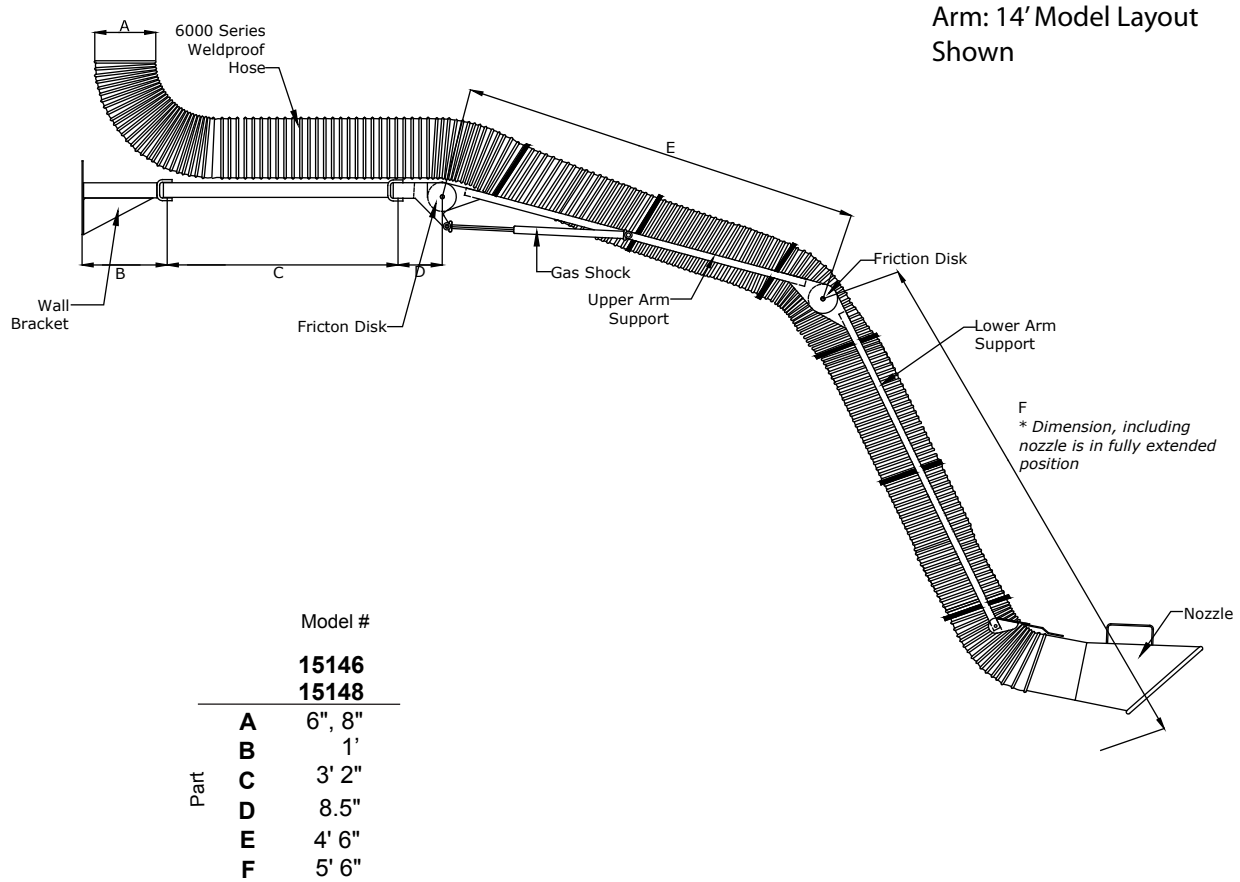
1306 Mill St., Rock Island, IL 61201  
877-608-4383 - [info@monoxivent.com](mailto:info@monoxivent.com)  
[monoxivent.com](http://monoxivent.com)

**Series 15000-EXT  
External Support Structure  
Welding Arm - 6" or 8" Hose**



| Part | Model # |        |
|------|---------|--------|
|      | 15076   | 15106  |
| A    | 6", 8"  | 6", 8" |
| B    | 1'      | 1'     |
| C    | NA*     | NA*    |
| D    | 8.5"    | 8.5"   |
| E    | 3' 2"   | 4' 6"  |
| F    | 4' 6.5" | 5' 6"  |

NA\* Not Applicable on these models.



## **Assembly Instructions**

- 1.** Attach the hose to the nozzle using the clamp provided.
- 2.** Bolt the nozzle to the arm using two 5/16"x1" bolts and lock nuts. The bolts should come from under the arm with the nuts located on top.
- 3.** Attach the hose to the sleeve using the clamp provided.
- 4.** Attach the hose to the arm using the straps provided.
- 5.** Mount the arm hose to the duct system using the hose clamp provided.

### **Arm Adjustment**

Tighten or loosen 1/2" tension bolts as needed. The arm should move easily, but stay in position when released.

Nozzle adjustments are accomplished by tightening or loosening 1/4" bolts with friction discs.